



**MDOT – Offices of  
Planning & Freight Logistics**

**“Integrating Strategic Planning”**

**January 12, 2005**

**TRB Annual Meeting**



## Presenters:

### Maryland Department of Transportation

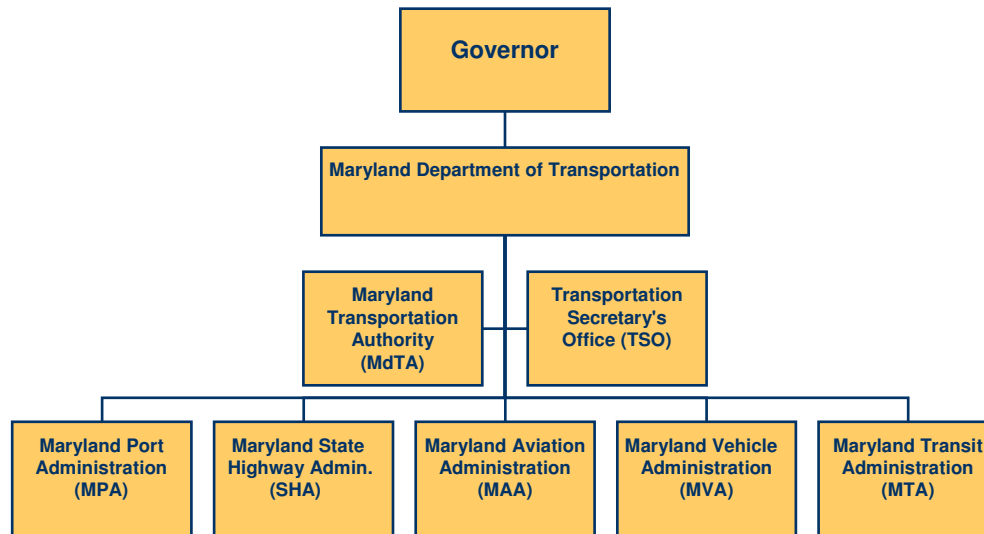
- Marsha J. Kaiser, Director  
Office of Planning & Capital Programming
- David Ganovski, Director  
Office of Freight Logistics

## Purpose of this Presentation:

- To discuss how MDOT integrates planning and freight logistics offices into strategic planning initiatives, outreach and coordination
- To share MDOT's new office addition that improves our ability to focus on freight and its economic value on shipments from, to and through Maryland

# MDOT's Organizational Structure

- Structure similar to US DOT
- Autonomous modes yet under same umbrella
- Multitmodalism/Intermodalism promoted within same organization



# Office of Planning and Capital Programming (OPCP)

- Develop and Implement State Report on Transportation:
  - Maryland Transportation Plan
  - Capital Program
  - Annual Performance Report
- Metropolitan Planning Organizations
- Land Use/Transportation Integration Plans:
  - Transit Oriented Development
  - Corridor Studies
  - Bay Ferry Studies

## OPCP (continued)

- Planning Policy Oversight for Modal Initiatives
- Multi-modal systems planning studies:
  - BWI Airport Access Study
  - Port of Baltimore Landside Access Study
  - BWI Air Cargo Study
- 20 Year Bike/Ped Master Planning Activities
- Air and Water Quality Compliance Programs and Initiatives
- Other duties as required

# OPCP Freight Mobility Plan

- Conducted in 2001 – assessed freight system in Maryland
- Stakeholder committee established and involved
- Evaluated existing distribution network
- Included an action plan to enhance the Freight Planning Process
- Identified Freight Initiatives and options for implementation of the plan – including dedication of staff resources to freight issues (i.e., OFL)

## Our Vision Is:

- Be Maryland's recognized consultative resource on freight movements at large
  - for all modes
- Work to assist and add value to others
  - Especially for each MDOT modal administration
- Be focused on critical issues:
  - Safety, security and cost-effective movement of goods
  - Helping Maryland maintain and improve its cost competitive position in local, national and global transportation markets

# OFL's Is also a DOT Office Who's Focus Is the Nuances of Freight:

- Highway, Rail, Water, Air and Intermodal
  - applications of same from, to & through Maryland
- For the entire Mid-Atlantic region:
  - a strategic freight corridor of national significance for moving freight and people
- Concern and evaluation of the negative impacts and increased economic costs associated with a do-nothing focus

# Why This Specific Focus On Freight?

- FHWA projects a 79% growth in freight in our geographic area by 2020.
- Left alone, congestion may choke us more!



# OFL's Responsibilities

- Serve as our states consultative resource on all freight logistics matters
  - Transportation economics, shipper perspectives, cost competitiveness and safety
    - Security team work with Gov's Office of Homeland Security
  - A cross modal multi-transportation freight focus (rail, truck, air, water)
  - Liaison and voice of reason for key freight stakeholders (trucking associations, port terminal operators, railroads (CSX, NS, Amtrak))

# OFL's Responsibilities - more

- Coordination with:
  - Federal, State, County and local businesses, agencies, associations, freight committees i.e;
    - AASHTO, TRB
    - I-95 Corridor Coalition
    - State/Local Offices of Economic Development
  - Brief Transportation Secretary and Governor on issues of significance

# MDOT Freight Planning

- OPCP, OFL
  - Manage Truck Freight Movement
  - Selective improvements to I-95, I-81 and other primary routes
  - Truck Stop Idling Initiatives
  - CVISN
  - Roadside sensing of diesel emissions

## MDOT Freight Planning (continued)

- OPCP, OFL
  - Continued dialogue with Class I Railroads: CSX, NS
  - Evaluate upgrades to north-south rail routing
  - Evaluate clearance or rail tunnels in Baltimore
  - Reduction of passenger/freight conflicts
  - Evaluate privatization of state-owned rail facilities

# Blending Freight Efforts Works! Teamwork & Results Are Evident!

- How MDOT's Integrated Coordination Works!
  - Freight Logistics
    - assists with the stakeholder input, benefits, coordination and competitive analysis
    - provides direct expert inputs (both operations and commercial implications)
  - Planning
    - leads the strategic planning efforts
    - strives for system balance
    - provides budget to implement improvements
  - All
    - coordinate and communicate on regional and national committee meetings amongst various offices on freight related studies and initiatives

# MDOT Freight Planning

- The Future:
  - Promote interstate planning coordination
  - Become a data resource for planners and decision makers in local jurisdictions
  - Explore public-private partnering
  - Analyze multi-modal trade corridors
  - Preserve the infrastructure

# THE BOTTOM LINE IS!

**It Is Our Focus, Our Knowledgeable and Specialized Staff and Excellent Teamwork, That Makes the Difference for Maryland!**